

OVERVIEW OF VERMONT'S MERCURY LAMP RECYCLING LAW

Gary Gulka
VT Dept. of Environmental
Conservation

Overview of the Law

Collection and Disposal of Mercury Containing Lamps

10 V.S.A. Chapter 164A §7151 – 7160



<http://www.leg.state.vt.us/statutesMain.cfm>

Background

- ▣ Mercury-containing lamps banned from landfill disposal since 2005 in Vermont
- ▣ Municipal mercury lamp collection and recycling programs in existence for 10-15 years
- ▣ Retail collection programs since 2005

Background

- ▣ 670 million mercury spent lamps generated in U.S. in 2003
- ▣ Vermont share: 1-2 million?
- ▣ 80% commercial / 20% residential
- ▣ Mercury levels in all lamps has decreased

Background

- ▣ Municipal Lamp Collection (2008)
 - 600,000 lineal feet
 - 16,000 CFLs
- ▣ Retail Lamp Collection (2008)
 - 140,000 lineal feet
 - 16,000 CFLs



Background

- ▣ Municipal Collection Programs – costs for recycling borne by municipal entities and users
- ▣ Retail Collection – 130–140 locations
 - Funded by Efficiency Vermont currently
 - No sustainable source of funding

Vermont Lamp Recycling Law

- ▣ Shifts some of the cost burden (transport and recycling) to lamp manufacturers for some of the spent lamps
- ▣ Relies on municipalities and retailers to perform collection/handling prior to transport and recycling

Vermont Lamp Recycling Law

- ▣ Requires mercury lamp manufacturers to establish a no-cost collection program for discarded lamps and bulbs at retail and municipal locations that voluntarily agree to serve as collection locations and sign and agree to conditions in a Participation Agreement

Vermont Lamp Recycling Law

Covered Lamps

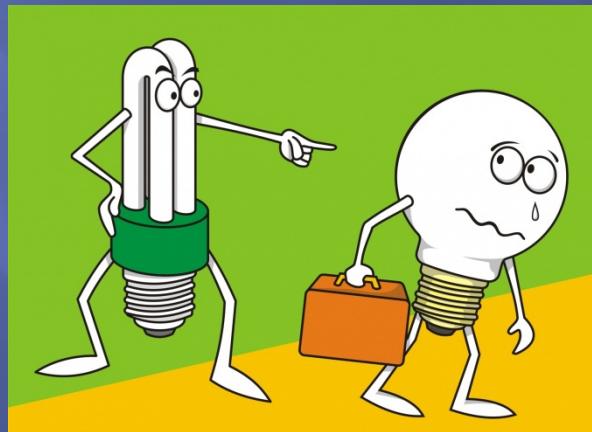
Any number of CFLs and 10 or fewer general purpose mercury lamps (other than CFLs)

CFLs, 8 foot or less linear fluorescents, U-tube, Circline, HID

Vermont Lamp Recycling Law

Education and Outreach

Lamp Manufacturers required to provide education program (posters and in-store advertising) and a general public awareness (such as web site, advertising)



Current Status

- ▣ Manufacturer Collection Plan submitted by February 1
- ▣ 30-day public comment period held
- ▣ DEC in process of reviewing the plan for final approval
- ▣ Effective date: July 1, 2012

Current Status

Comments to Be Addressed

Pin-base CFL limit

No limit, but we ask Districts to document higher volumes of CFLs by particular users. The program was not intended to address large generators.

Commingling of covered and non-covered lamps

Could be allowable provided there is mutually agreed upon documentation of covered vs uncovered and cost allocation (containers, etc)
for any other handling charges

Current Status

Comments to Be Addressed

Consolidation of collection sites

Single municipalities (not part of district) will be required to consolidate. Districts with multiple collection sites will not be required to consolidate collection sites. Districts should work with the contractor to make collections efficient, including minimum volume per site to warrant pickup at no charge.

Current Status

Comments to Be Addressed

Accessibility of containers to the general public (self serve) Plan says inaccessible to the public

Not an issue for retail locations generally.

This is an issue for some municipal collection programs. How to minimize breakage by the public and additional costs that may be incurred.

Current Status

Comments to Be Addressed

Participation Agreements – reference to “household” lamps

To be removed and referred to as “general purpose

Participation Agreements – Indemnity clause
Currently under review

Going Forward:

We've had great success as a state in municipal and retail mercury lamp recycling to date, with minimal environmental concerns

Year 1 will be a trial and learning period in the program to make it effective and some adjustments may be necessary

Contact Information

Gary Gulka

gary.gulka@state.vt.us

802-241-3626